

SERIES 3000 MULTI - POSITION COAXIAL SWITCHES

Description: Series 3000 units meet MIL-E-5400 Class 1 and feature 3, 4, 5, 6, and 8-position normally open, failsafe and magnetic latching coaxial switches with break before make contacts. A pulse of only 20 ms at 28 VDC is required for switching. The 3000 Series switches are available with your choice of RF connectors.

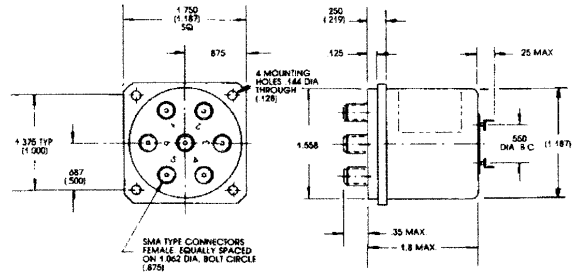
SPECIFICATIONS

Switch Type	Single pole/3, 4, 5, 6, or 8 throw
Operating Modes	Normally open, failsafe, latching
RF Contacts	Break before make
Frequency Range	DC to 12.4 GHz (to 18 GHz with SMA connectors on 3 through 6 position; to 16 GHz on 8 position switches with SMA connectors)
Insertion Loss	0.5 dB max.
VSWR	1.5:1 max.
Isolation	60 dB min.
Impedance	50 ohms
Connectors, RF	SMA, TNC, BNC, N
Operating Voltage	28 VDC standard (other voltages available)
Connector, Power	Feed through terminals or MS connectors
Switching Time	20 ms max.
Operating Life	1,000,000 cycles

Model 3607-1



Model 3301-1



DIMENSIONS: Model 3607-1 (Model 3301-1 in parenthesis)