

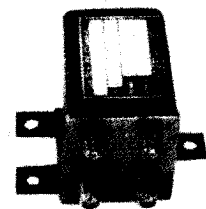
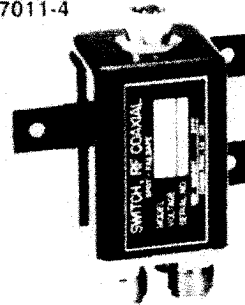
SERIES 7000 DPDT TRANSFER COAXIAL SWITCHES

Description: The 7000 Series covers a class of highly reliable service-proven transfer switches. Units are available with a failsafe or latching actuator. This series is designed to meet MIL-E-5400 Class 1.

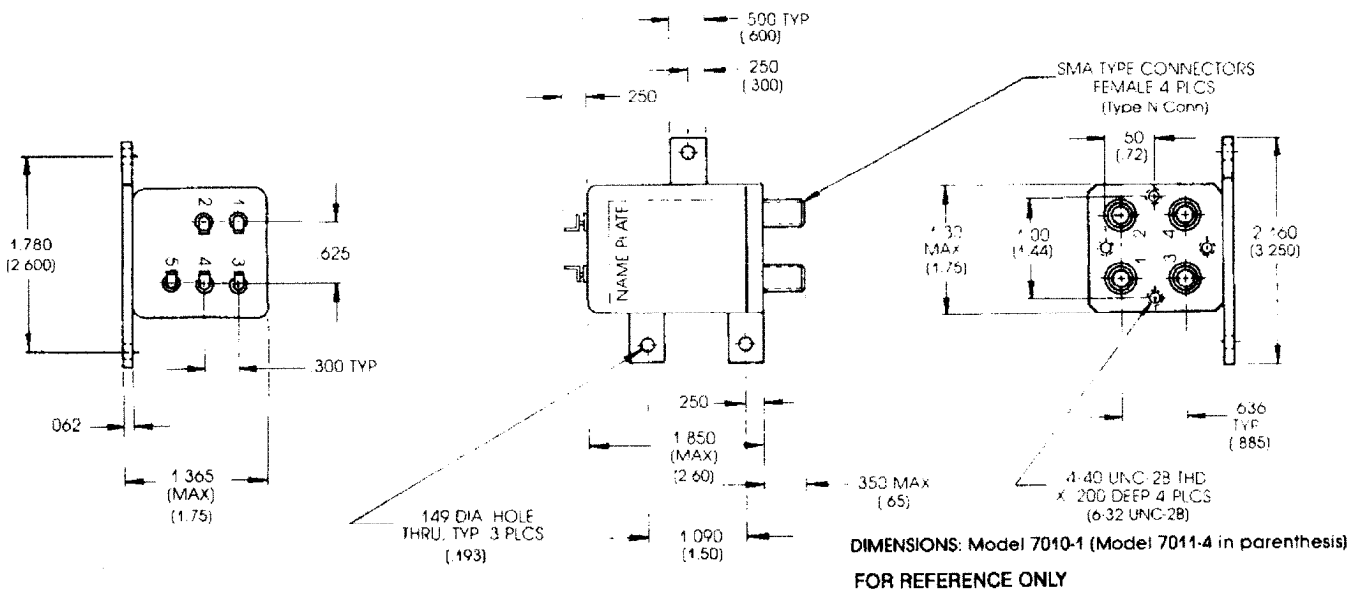
SPECIFICATIONS

Switch Type	DPDT transfer
Operating Modes	Failsafe or latching
RF Contacts	Break before make
Frequency Range	DC to 12.4 GHz (to 18 GHz with SMA connectors)
Insertion Loss	0.5 dB max.
VSWR	1.5:1 max.
Isolation	60 dB min.
Impedance	50 ohms
Connectors, RF	SMA, TNC, BNC, N
Operating Voltage	28 VDC standard (other voltages available)
Connector, Power	Feed through terminals or MS connectors
Switching Time	20 ms max.
Operating Life	1,000,000 cycles

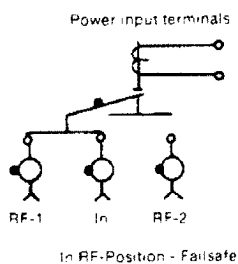
Model 7011-4



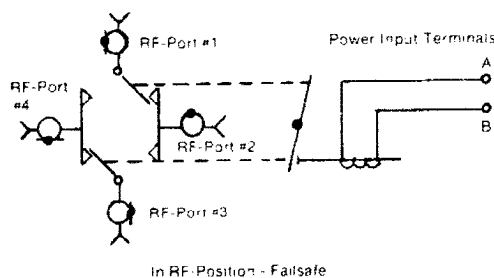
Model 7010-1



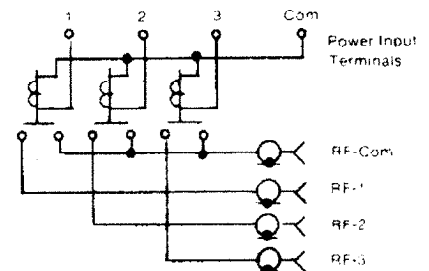
TYPICAL SCHEMATIC - SPDT



TYPICAL SCHEMATIC - TRANSFER



TYPICAL SCHEMATIC - MULTI-POSITION



MBF Microwave also manufactures waveguide switches, adaptors, horns, power dividers, portable signal generators (azimuth alignment), and special relays. Contact factory for information on these products.